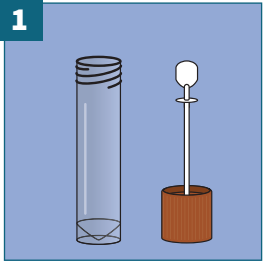
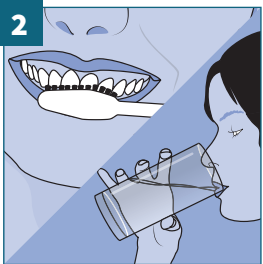


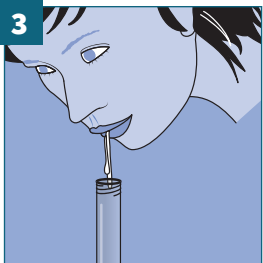
2B: SPUTUM TEST INSTRUCTIONS



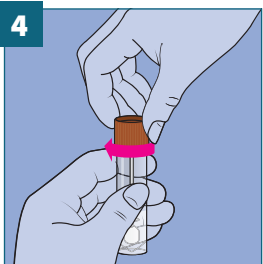
1 Inside the package is a tube with a brown cap.



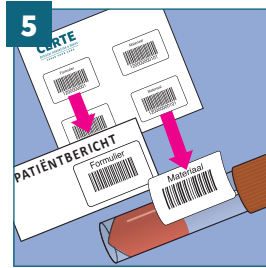
2 Prepare by thoroughly cleaning your teeth, mouth and throat; then rinse well.



3 Cough forcefully and collect the resultant phlegm (sputum) in the small container.



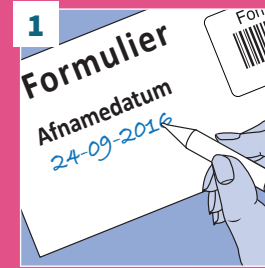
4 Tightly screw the cap onto the tube.



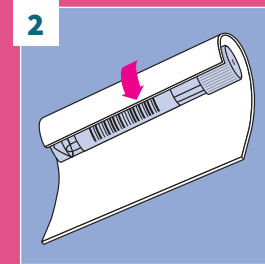
5 Affix the 'form' sticker to the patient message form and the 'material' sticker to the tube. Be sure to place the sticker with the barcode lengthwise on the tube.

Write the collection date on the patient message form.

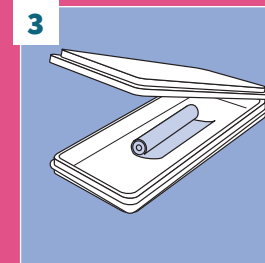
PREPARE FOR DISPATCH



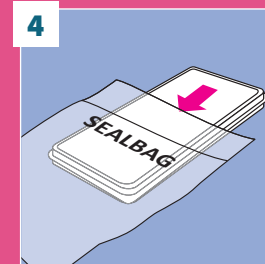
1 Do not forget to fill in the collection date.



2 Wrap the tube with the absorbent paper insert.



3 Now place this inside the blister packaging.



4 Put the blister packaging into the seal bag and seal it shut.

There is an additional compartment on the non-printed side of the seal bag, insert the application form here.

Your GP will give you information on how to hand in the material.